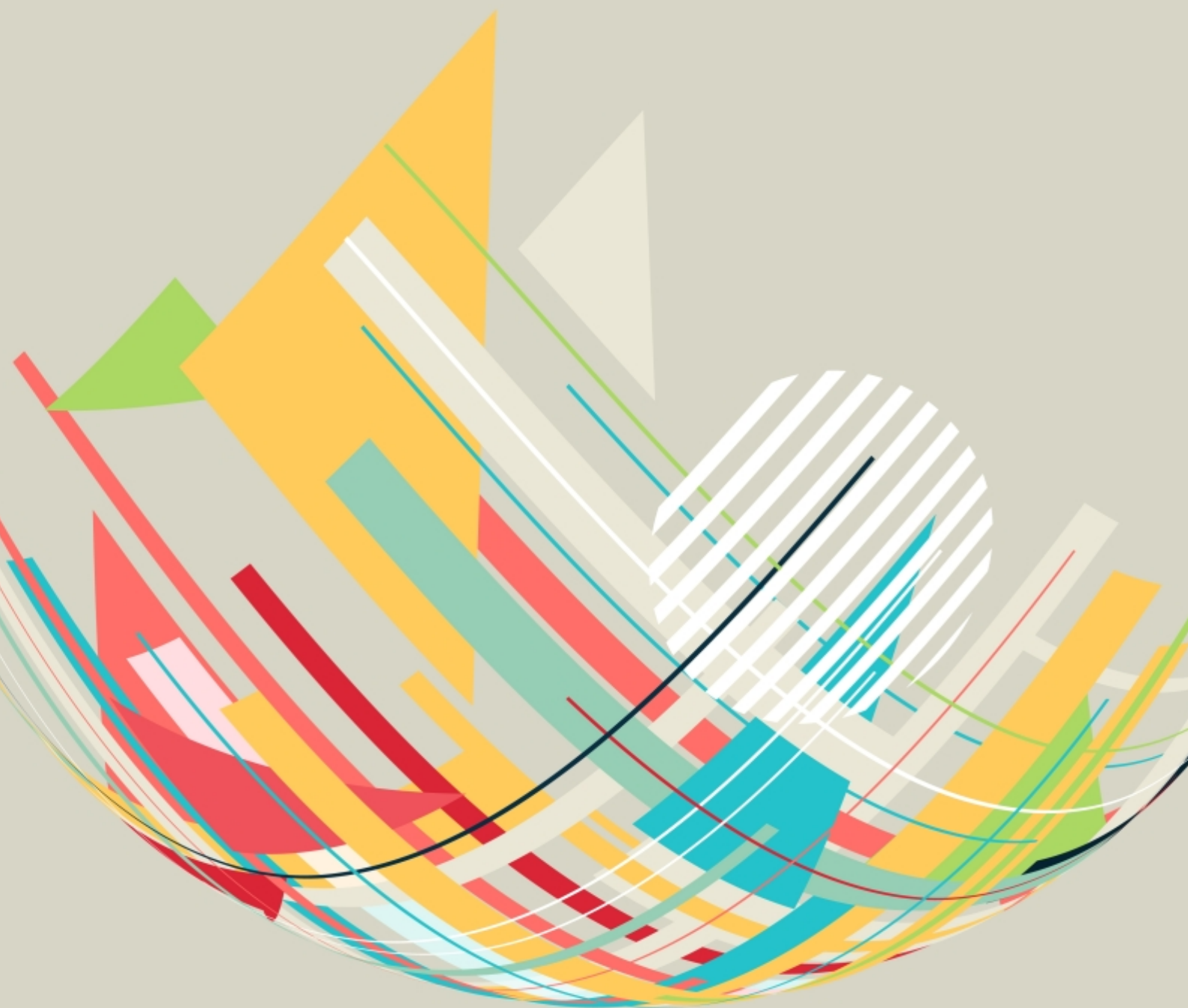


NYLON

Carpet Tile



LANDSCAPE

Collection

COMMERCIAL CARPET FLOORING





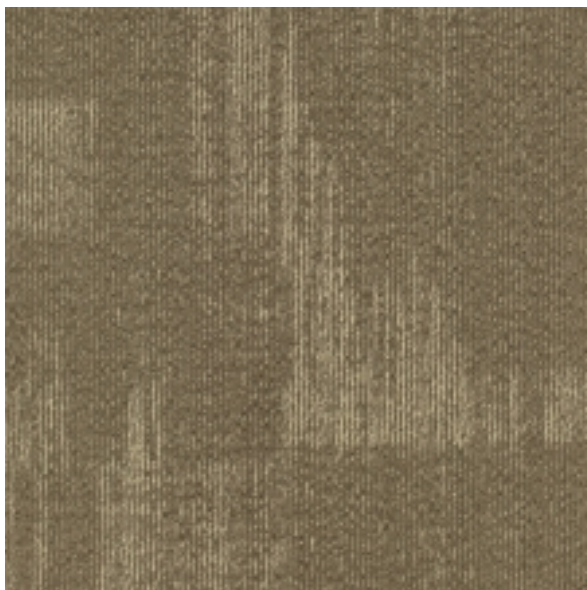
“The Modern Textile Composite Flooring”

L-5

Landscape collection is a premium High Quality Nylon carpet design, perfect for any kind of interiors & making every step a delight and every space a masterpiece

Landscape Collection

(NYLON CARPET)
50cm*50cm



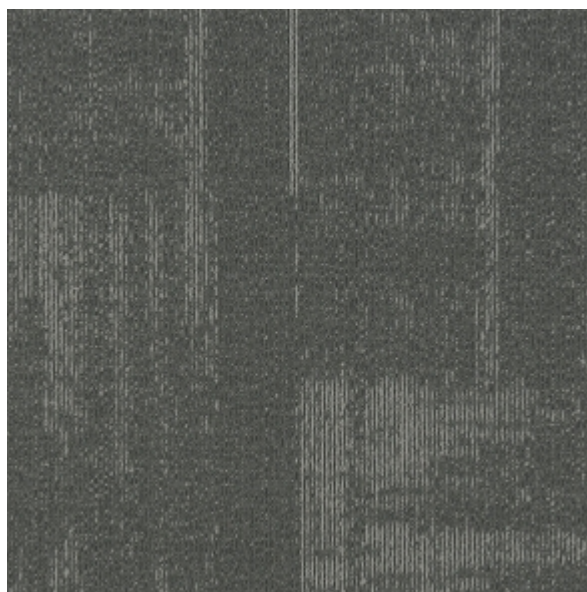
L-1



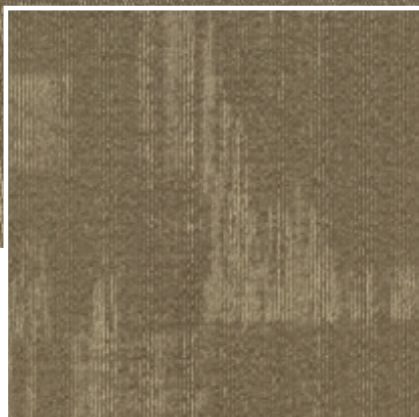
L-2



L-4



L-5



Landscape Collection

L-1



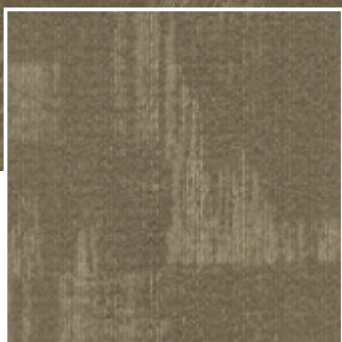
Landscape Collection

L-2



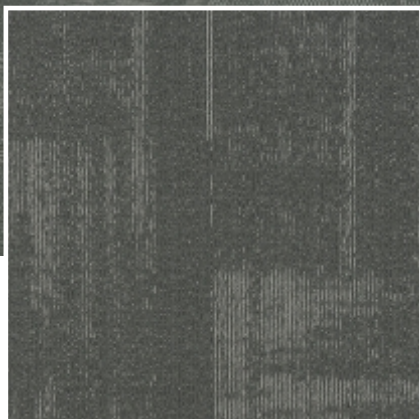
Landscape Collection

L-4



Landscape Collection

L-1,2



Landscape Collection

L-5



Static Electricity
Permanent Lifetime Protection-less than 3.5kv



Lodging Resistant
Superior resilience of fiber suitable for wheels



Anti rubbing and feet trample because of fiber properties.



Dimensional stability
Not to change size by more then 0.5mm in normal use



Superior Sound insulation effect.



Color Fastness to rubbing
According to GB/T3920-2008 standards it is Grade 4 for dry rubbing Grade 3 for wet rubbing



Sustainability
All yarns used are solution dyed to minimize use water and exclude any effluent production ISO14001 & ISO9001



Installation
Tackifier or releasable adhesive recommended



Independent Textile
Testing
Service, Inc.

SGS



GLP100264

Green Carpet (VOC)
CRI Green Label Plus-Accredited

This product complies with
California DPH Section 01350
Version 1.2

A USGBC® recognized third party
certification program for LEED v4.1
EQ Credit Low-Emitting Materials.



SPECIFICATIONS

Construction	Multi-Level Loop
Fiber Composition	100% NYLON 6
Tufting Gauge	1/12"
Stictes	11 per inch
Pile weight	18 oz/yd2
Pile height	3-5 mm(+/-0.5mm)
Backing Structure	PVC with fiberglass
Size	50cm*50cm
Box Packing	20pcs per box/5sq.mtr

Warranty & Performance:

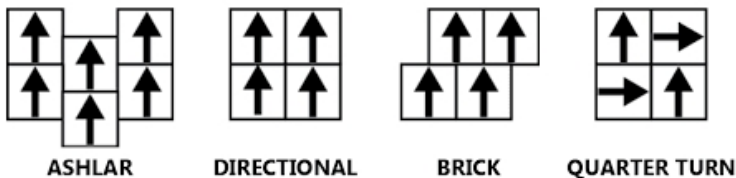
10 years carpet wear warranty*
Ideal for heavy commercial usage
Anti-shock carpet warranty
High Quality Backing & Fibers



Carpet to be used under normal dry conditions. To be installed in specified & proper usage of areas only. Do not install near wet areas, or arising from excessive moisture. Prevention of carpet is must need from soil before it gets damage & need regular cleaning precess as per need & area of use for longer life, but it is important to implement a maintenance program from the very beginning Carpet tile offers many advantages over other flooring systems, such as sound absorption, reduced fatigue and lower maintenance costs. Always follow company installation instructions. The Carpet and Rug Institute has a Seal of Approval program that grades various maintenance equipment, including vacuum cleaners. For a list of these certified vacuum cleaners see the CRI website at www.carpet-rug.org

Performance Specifications	Test Code	Standard	Test Results
Flammability Tests			
Radiant Panel	ASTM E 648-17	0.45 watts/m ³	0.87watts/m ³
Methenamine Pill	ASTM D 2859-16	8	8 Pass
Smoke Density	ASTM E 662-15a	DENSITY ≤450	≤450 Pass
Stability			
Dimensional Stability	ASTM D7570	≤0.2%	≤0.2% Pass
Tuft Bind	ASTM D1335	≤8.0 lbs	6.4 lbs Pass
Static Propensity	AATCC 134-2011	≤3.5KV	1.1KV Pass
Light	AATCC 16.3	≥level 3	level 4 Pass
Rubbing/Crocking	AATCC 165	≥level 3	level 5 Pass
Hexpad Drum	ASTM D5252	≤3-4	2 Pass
Green Carpet	CRI Green Label	-	GLP 100264

Installation methods:



*Carpet color can vary from dye to dye lot. So please refer to original sample for final decision.

*Carpet specifications may change without prior information for product improvement & enhancement