







WW KALAM

MAROON









WW KALAM

OLIVE









WW KALAM

IVORY









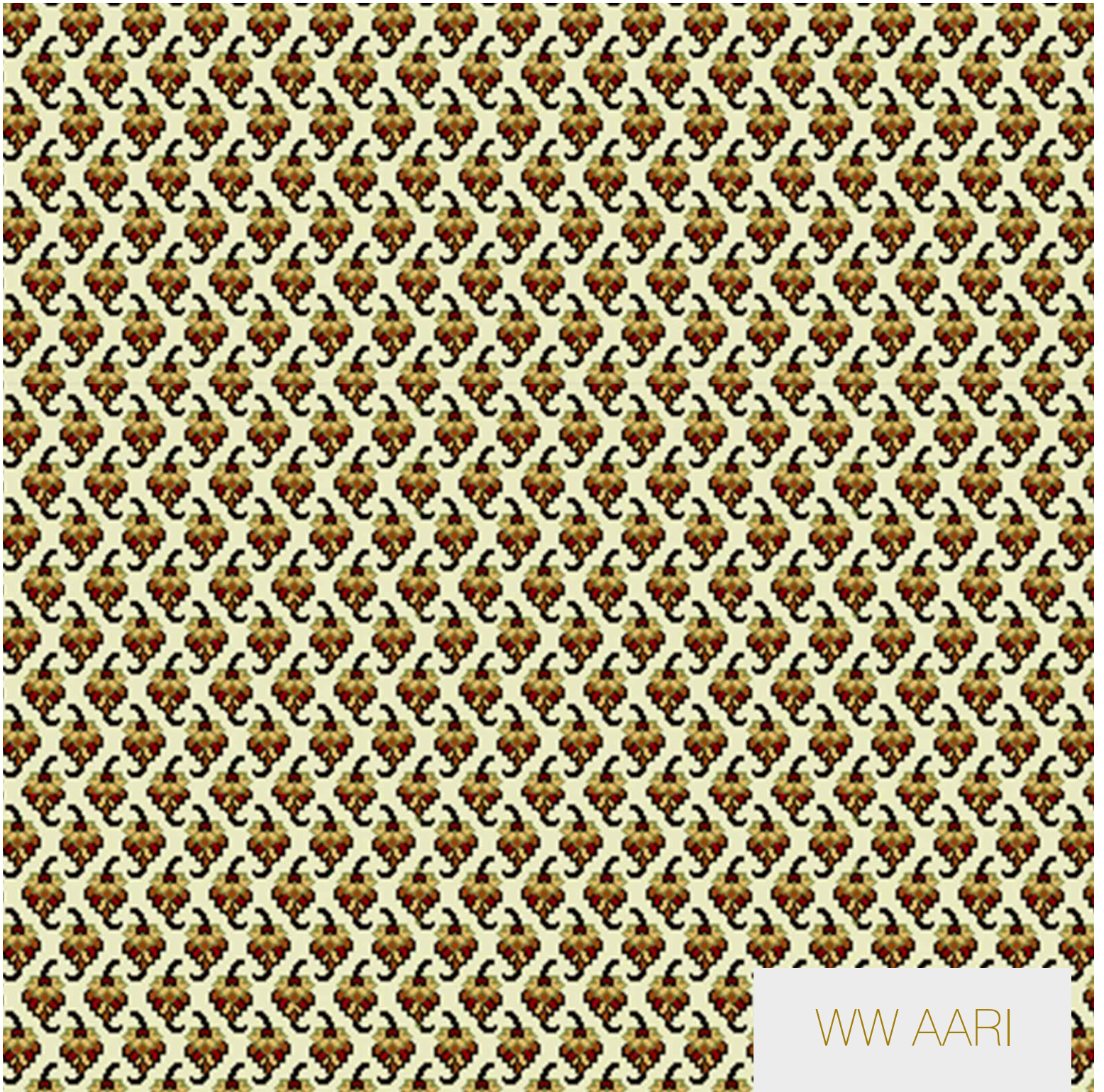
WW KALAM

MUSTARD









WW AARI

IVORY









WW SWISS

OLIVE









WW SWISS

MAROON









WW SWISS

IVORY









WW KASHI

MAROON









WW KASHI

IVORY



# SPECIFICATIONS

## DESCRIPTION

Fiber Type	WW WILTON SMART
Filling	GENUINE WOVEN WILTON
Secondary Backing	JUTE
Width	LATEX
Pile Content	396 CM
Pile Height	100% PP Heat Set
Total Height	12 MM
Pile Weight	14 MM
Total Weight	2250 GSM
Number of Knots/SQMT	3050 GSM
	7,66,800

- Shading or Pile reversal is an inherent attribute of cut pile carpets and it is not a manufacturing defect
- Color may slightly vary from one dye lot to another dye lot
- Total weight of the product can have a normal variation of  $\pm 5\%$
- We reserve the right to amend the above specification without prior notice with changes in raw material supplies

## MAINTENANCE

- Vacuuming is the most important cleaning procedure. Effective vacuuming prevents soil from spreading through the carpet.
- Correct and regular maintenance will increase the lifespan of a carpet and also helps to maintain its appearance. Cleaning should be proportional to the amount of soiling to which the carpet is subjected.
- For a heavy soiled carpet, professional cleaning is recommended.
- If using an upright vacuum cleaner with rotating beater bar and brush. ensure that it is at a higher seating to reduce possible fuzzing.
- Technically, carpet pigments are better, but color's may fade. If possible the carpet should be protected from intense, direct sunlight.
- Although color variation are not imminent, however, may arise due to different Dye lot.
- To reduce soiling and wear high traffic areas, place walk-off mats at all entrances. These must be cleaned and rotated regularly.



MRP	RRP	GST
₹280/- SQFT	₹250/- SQFT	₹30/- SQFT