

UMBRA

Exquisitely Aesthetic

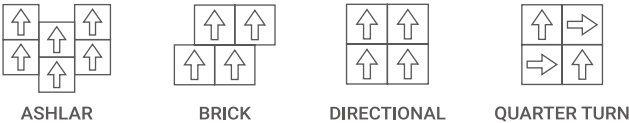
50 X 50 cm

SPECIFICATION

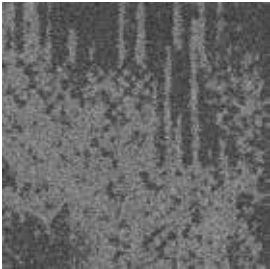
Style Name	:	Umbra
Construction	:	Multi-level loop (Colorshift)
Yarn	:	100% Universal Nylon6
Color System	:	100% Solution Dyed
Gauge	:	1/10
Stitches	:	9 per inch
Pile Weight	:	25 oz/yd²
Pile Height	:	7.0 mm -8.0 mm (±0.5 mm)
Backing	:	PVC with fiberglass
Tile Size	:	50 cm x 50 cm
Area of Use	:	Heavy Commercial
Flammability	:	Passes (ASTME648-10) Class I Passes (GB 8624-2012) B1
Smoke Density	:	Passes ASTM E 662 Less than 450
Static Propensity	:	Passes AATCC-134≤3.5kV
Static Control	:	Life-of-the carpet Static Protection

—

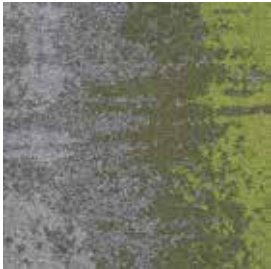
INSTALLATION METHOD



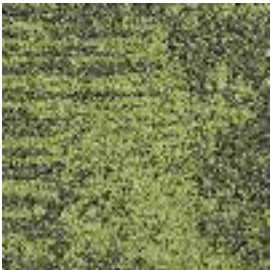
UM01



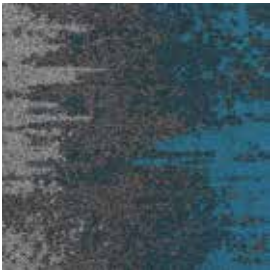
UM02



UM03



UM04



UM05



UM06



UM07



UM08



UMBRA

Exquisitely Aesthetic



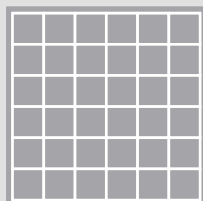
UM02



UM05



UM06



UMBRA

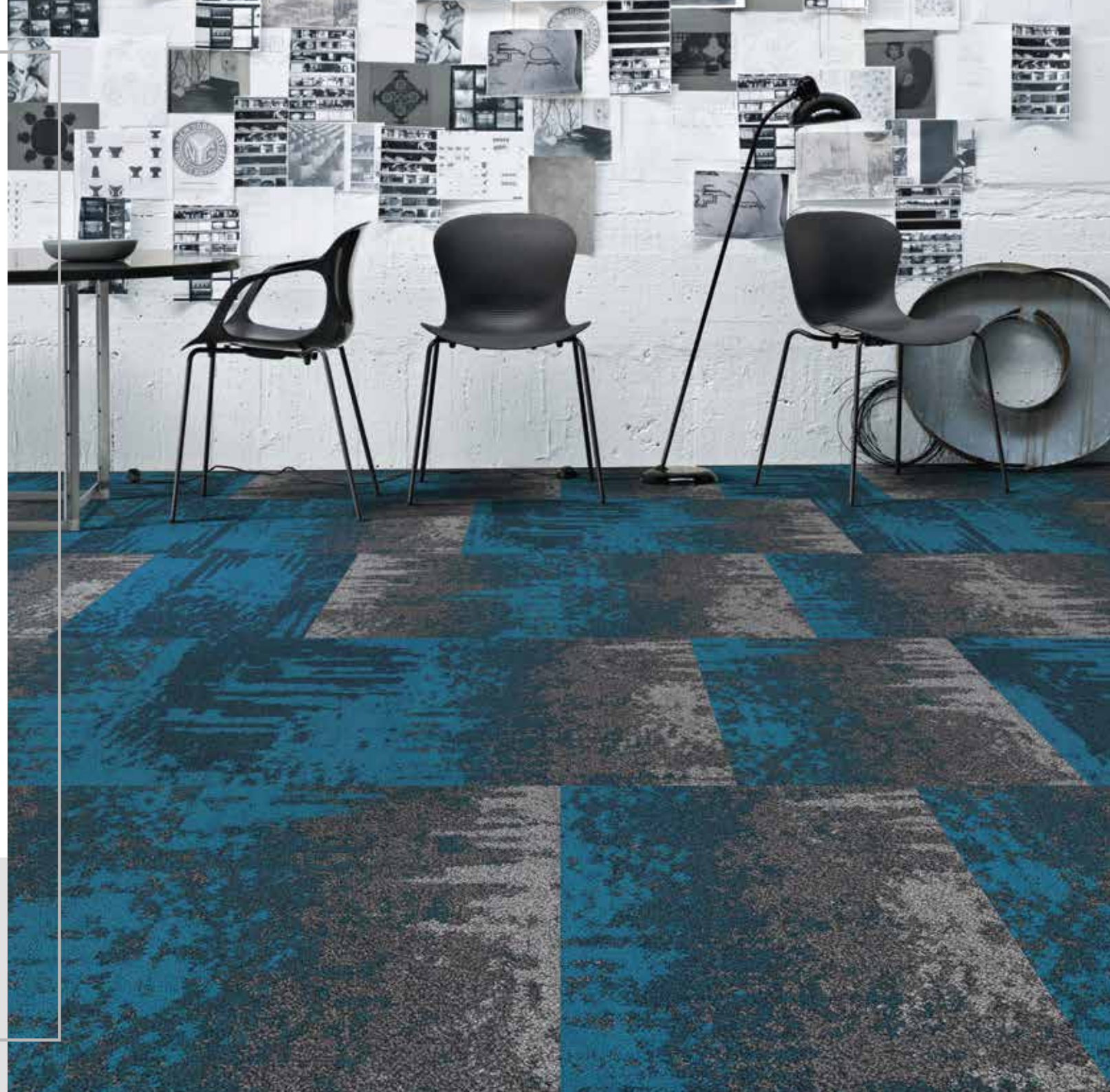
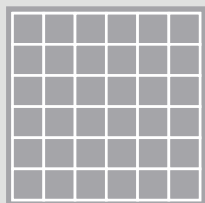
Exquisitely Aesthetic



UM05

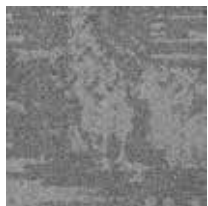


UM06

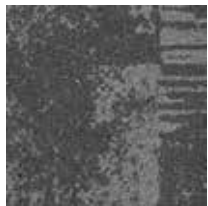


UMBRA

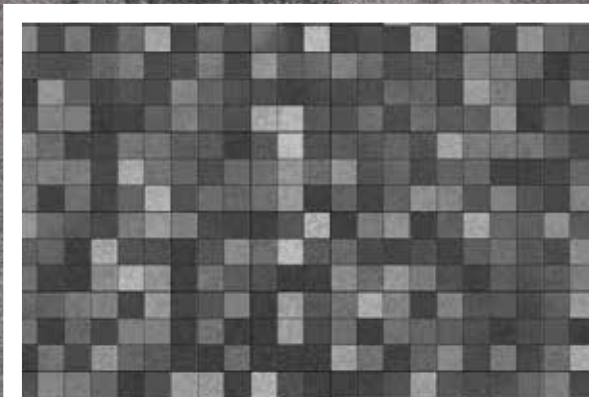
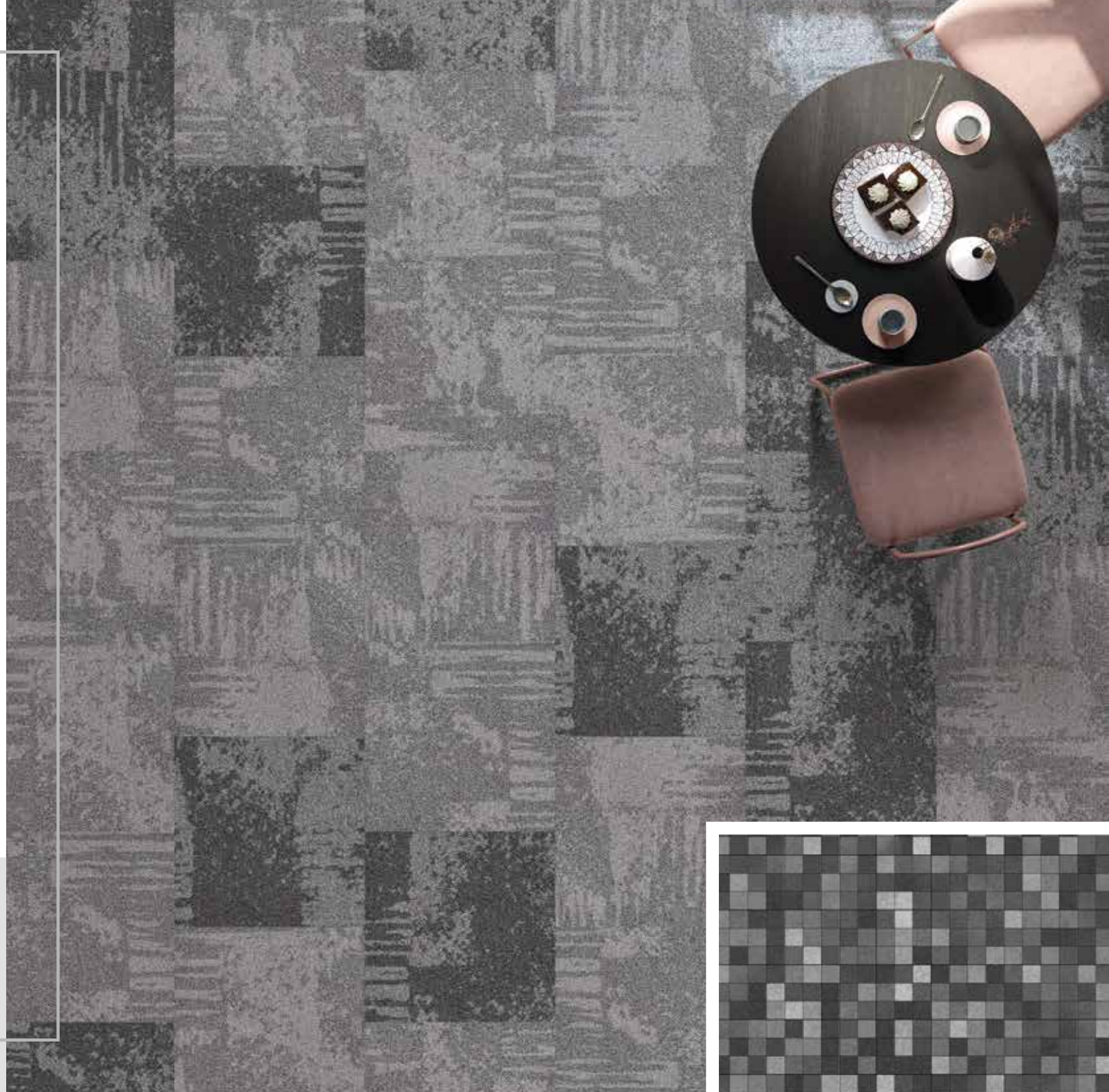
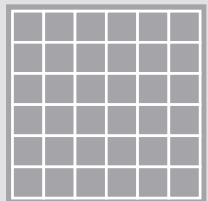
Exquisitely Aesthetic



UM01

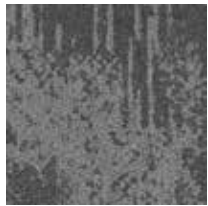


UM02

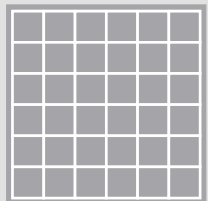


UMBRA

Exquisitely Aesthetic



UM02



UMBRA

Exquisitely Aesthetic



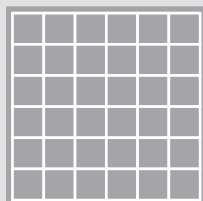
UM01



UM03



UM04



UMBRA

Exquisitely Aesthetic



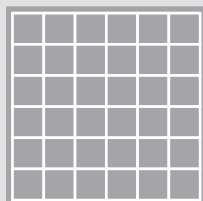
UM01



UM03



UM04



UMBRA

Exquisitely Aesthetic



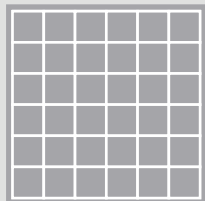
UM02



UM07



UM08



UMBRA

Exquisitely Aesthetic



UM07



UM08

